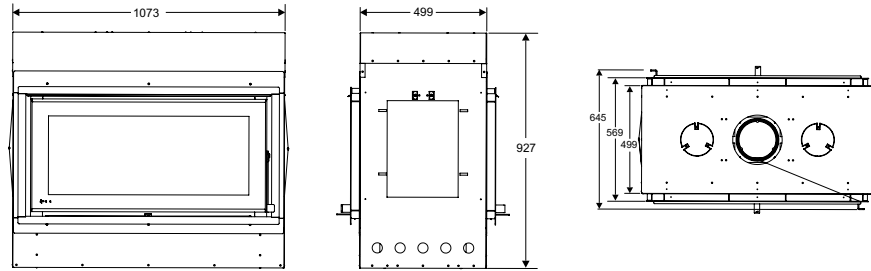


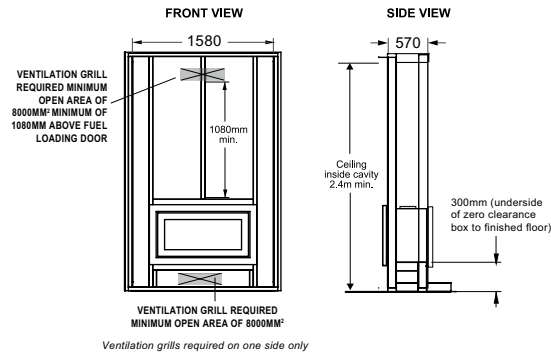


# LIVING FIRE

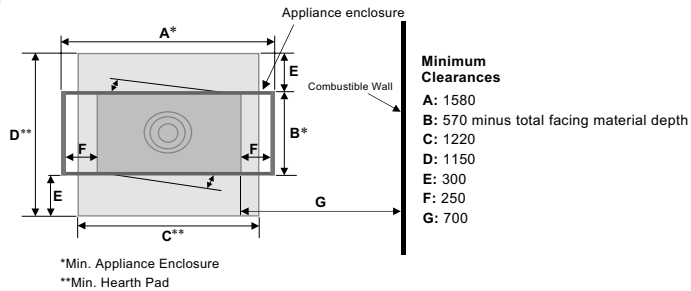
## MANSFIELD



## FRAMING



## CLEARANCES



Note: Heating capacity and any burn times are a guide only and can be affected by some or all of the following examples: drafts under doorways or between floorboards, large glass areas not covered by heavy drapes/curtains, green, wet or damp wood, ceiling heights greater than 2.4 metres or cathedral type ceilings, poor or no insulation.

All product specifications are subject to change without notice. Before installing refer to the relevant product manual for full and up to date information. Product pictures are a guide only, all wood fires must be installed as per AS 2918. All Regency wood fires exceed stringent joint Australian and New Zealand Standards ASNZS 4012/4013 (2014). Not all products are available at all outlets.

### Energy Specifications

Optimum Efficiency	63%
--------------------	-----

### General Specifications

Product Size	Large
Emissions (g/kg)	1.3
View Area	4898 sq.cm.
Room Size	Large
Vent Type	Double Wall Pipe
Vent Size (Air Intake)	N/A
Vent Size (Exhaust)	175mm

### Fireplace Dimensions

Width (front)	1073 mm
Height	927 mm
Depth	499 mm

Dimension Notes: with standard clean front trim

**LIVING FIRE**  
PAUL AGNEW | DESIGN

Richmond Showroom:  
361 Swan Street, Richmond 3121

Bayside Showroom:  
148-150 Cochranes Rd, Moorabbin 3189

03 99 777 888
www.livingfire.com.au