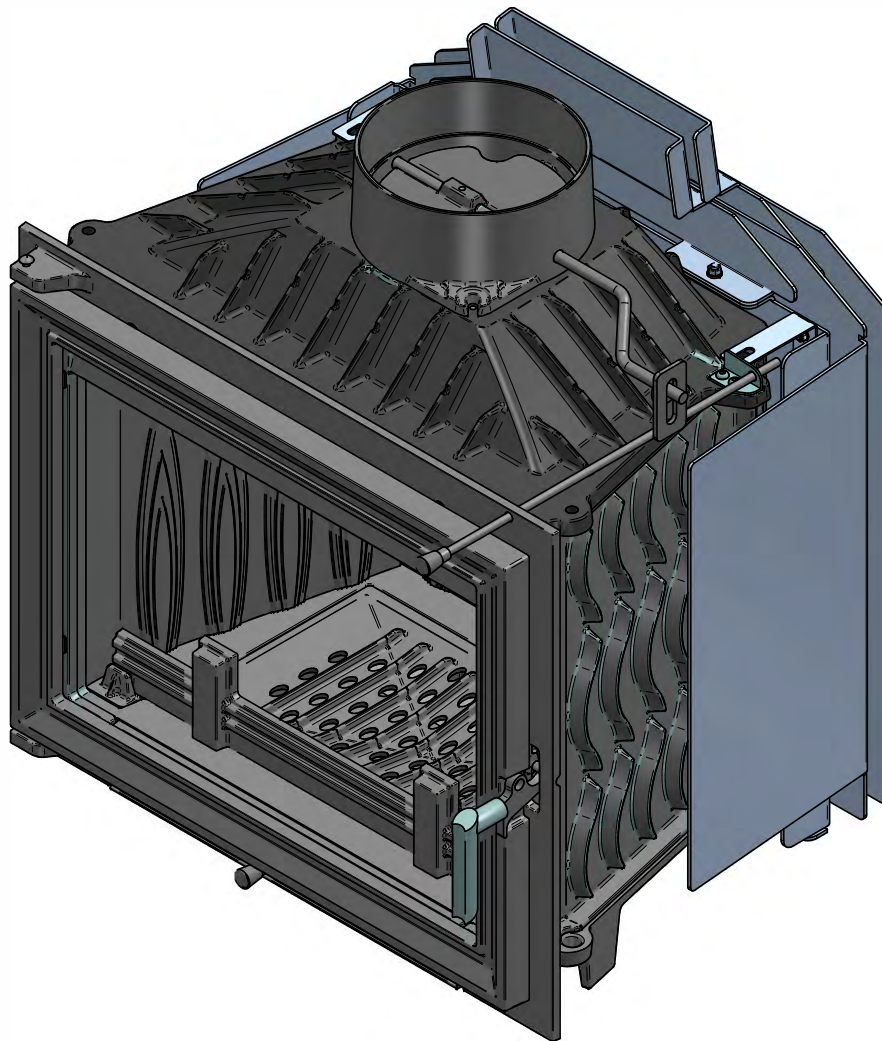


Pyro Range

600-GF MODICA

HEAT SHIELD INSTALLATION SHEET



Version 1 23/03/23

Contents of manual may be updated without notice.
For the latest version of this manual please refer to
our website: www.paulagnewdesigns.com.au

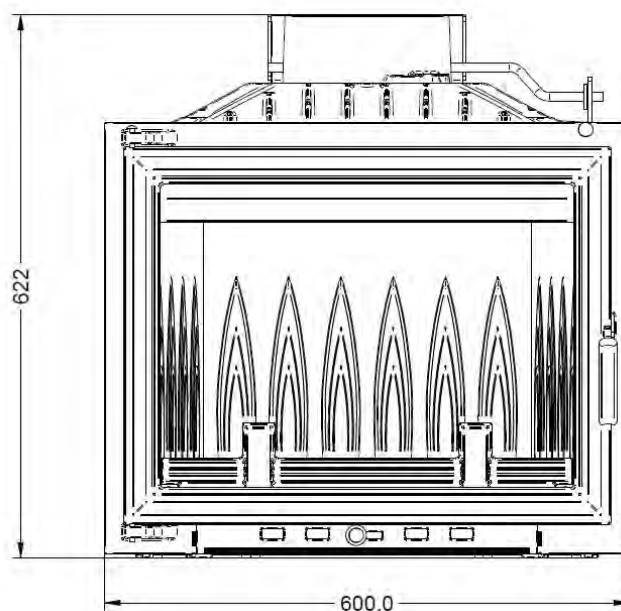
PAUL AGNEW

DESIGNS

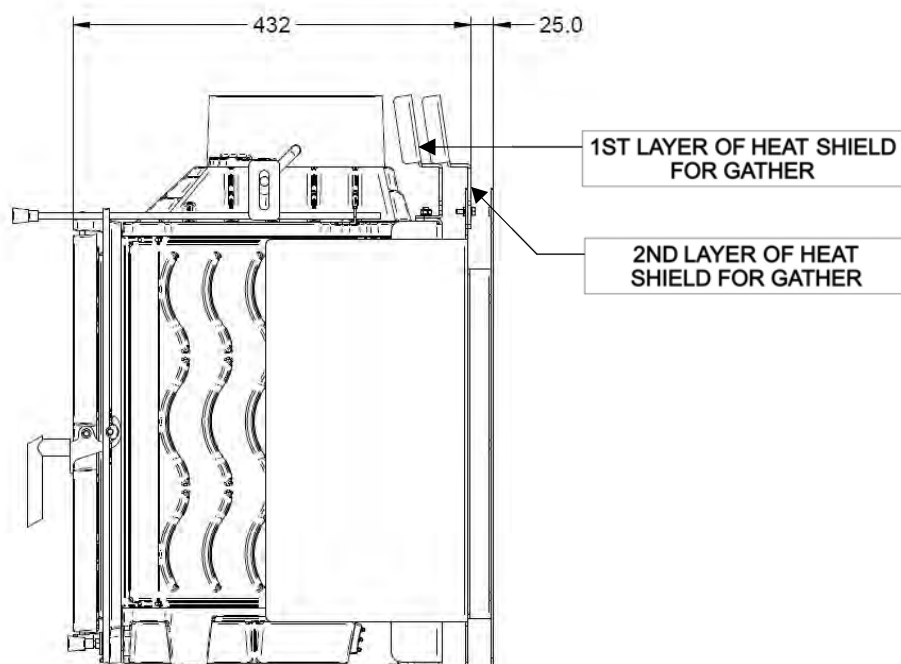
HEAT SHIELD 600 MODICA

UNIT DIMENSION

FRONT VIEW



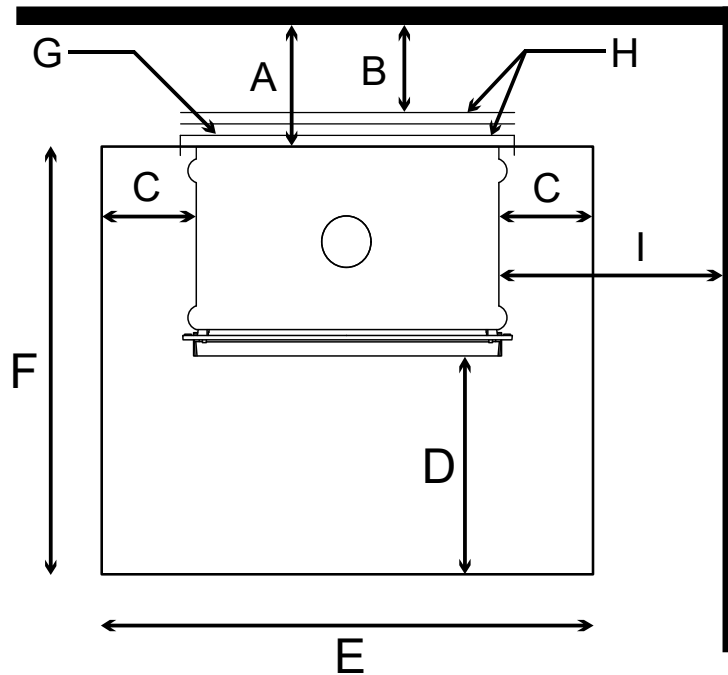
SIDE VIEW



HEAT SHIELD 600 MODICA

CLEARANCE TO COMBUSTIBLES

■ Combustible surface



		Heat shield with 25mm air gap
A	Rear of heater to rear wall	232
B	Heat shield to back wall	150*
C	Hearth extension from the side of the heater	200
D	Hearth extension from the glass opening*	450
E	Width of hearth	1000
F	Depth of hearth	910
G	Air gap between each skin	25
H	Double steel heat shield	3 min.
I	Heat shield to side wall	800

* The appliance must also be fitted with a 900mm high x 180° stainless steel rear flue shield fitted between the solid casing and the active flue.

Hearth recommendation:

It is highly recommended that Hebel Block material to be used as the hearth both directly below the appliance and extending beyond the appliance base. Please consult with retailer or installer if you wish to change the hearth material or clearances.

* Please refer to Hearth Clearance document for further information.

PAUL AGNEW | DESIGNS

Pyro Range

Modica 600

148 Cochranes Road
Moorabbin, Victoria 3189

www.paulagnewdesigns.com.au

info@paulagnewdesigns.com.au